

# WATERPROOF TYPE PALM-SIZED INFRARED THERMOMETER MODEL IR-TE2



**Washable!!**

**Non-contact temperature measurement in one second!!**

Model IR-TE2 palm-sized infrared thermometer is designed to measure the surface temperature of objects without making contact with them. The built-in laser sighting pinpoints the center of the area being measured on the target.

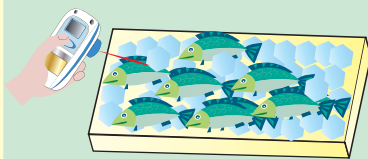
## ■ FEATURES

- Conforms to IP67 (dustproof and waterproof) and washable.
- ABS resin housing with sanitary specification— fits in your safety program.
- Shockproof construction
- Auto power-off function for saving battery life
- Wide temperature range of -40 to 300°C (-40 to 572°F) - °C/°F selectable
- Palm size and lightweight – easy to use in your hand and easy to carry or store away
- Traceability certificate available upon request (sold separately)

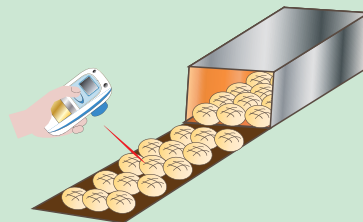


## Food Temperature Control

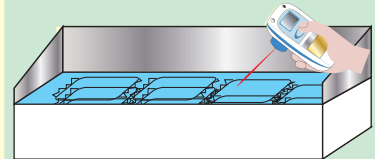
- Food Ingredients Incoming Inspection



- Food Processing

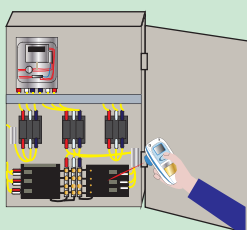


- Frozen Food Display

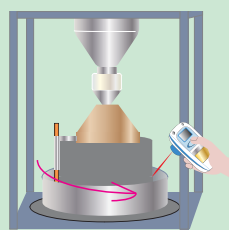


## Difficult Temperature Measuring Points

- Distribution Panel Inspection



- Rotating Objects



- Factory, Plants
- Civil Engineering and Construction
- Small Places Which is Hard to Reach

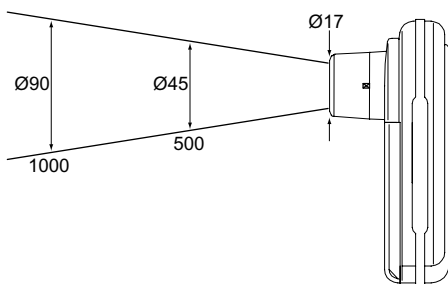
## SPECIFICATIONS

Temperature range:	-40 to 300°C / -40 to 572°F selectable
Accuracy rating:	±1% ± 1 digit or ±2°C (±4°F) ± 1 digit, whichever is larger ---- For 0 to 300°C (32 to 572°F) ±3°C (±6°F) ± 1 digit---- for -30 to 0°C (-22 to 32°F) ±5°C (±10°F) ± 1 digit---- for less than -30°C (-22°F) At ambient temperature of 25 ± 2°C (77 ± 4°F) and e=1.0
Repeatability:	Within 1°C (2°F) ± 1 digit
Response time:	1 second (90% response)
Targeting:	Center of measuring spot is marked by laser beam. (Laser: 650nm, less than 1mW, JIS class 2)
Display:	Reflection type LCD, 3 digits
Display resolution:	0.5°C (1°F) for -20 to 100°C (-4 to 212°F) 1°C (2°F) ---- except the above range
Auto power off:	After 30 seconds of no key operation
Emissivity:	0.95 (default) 0.8 to 1.0 adjustable by internal switch (0.05 increments)
Working temperature:	0 to 50°C (32 to 122°F)
Working humidity:	90%RH or less (no dew condensation)
Storage temperature:	-20 to 55°C (-4 to 131°F) (no dew condensation) For long time storage, removing of batteries is required.
Battery:	Alkaline AAA, 2 pieces
Battery life:	About 10 hours continuous operation
Casing:	ABS resin (anti-bacteria)
Weight:	123g (including batteries)
Standards:	CE (EN61326-1 Annex C – Portable instrument)
Sealing:	IP67 (waterproof and dustproof)



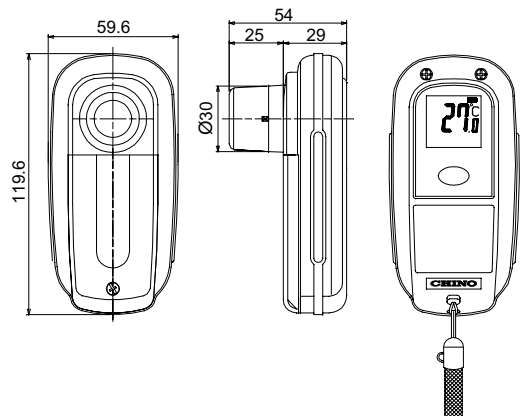
Nearly full size

## DISTANCE AND DIAMETER



Unit : mm

## DIMENSIONS



Unit : mm

Specifications subject to change without notice. Printed in Japan (I) 2014. 2

## CHINO CORPORATION

32-8 KUMANO-CHO, ITABASHI-KU, TOKYO 173-8632

Telephone : +81-3-3956-2171

Facsimile : +81-3-3956-0915

E-mail : inter@chino.co.jp

Website : http://www.chino.co.jp/